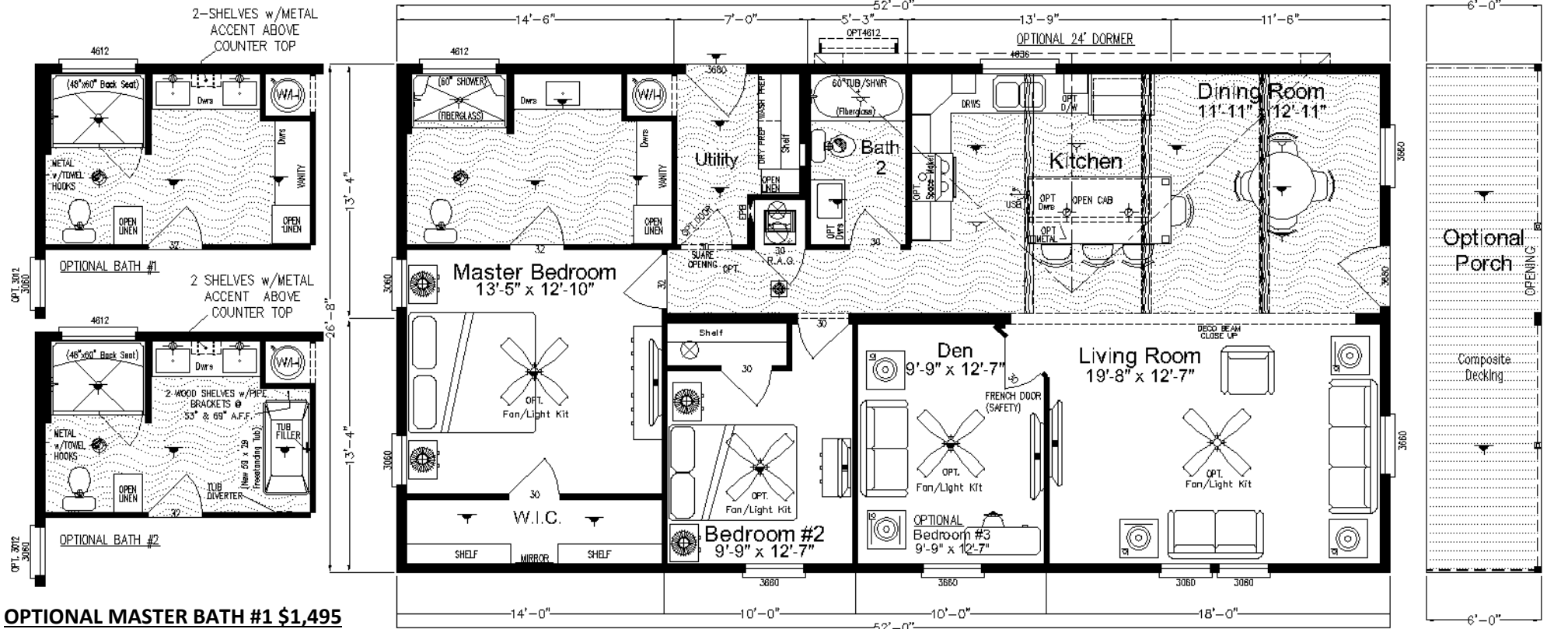
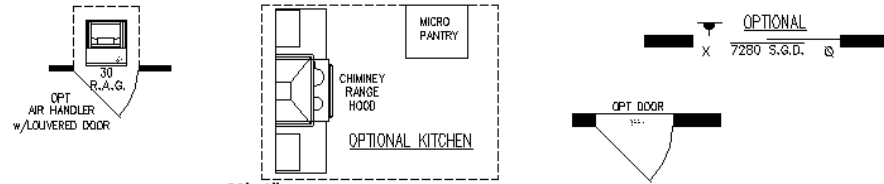


OPTIONAL KITCHEN \$1,295

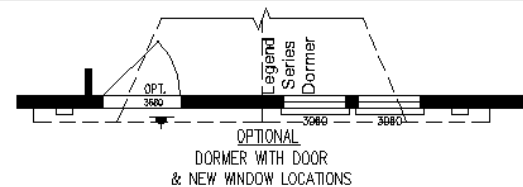
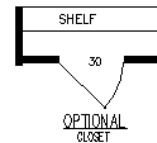
INCLUDES:

- MICRO PANTRY
- CHIMNEY RANGE HOOD
- FULL TILE BEHIND RANGE HOOD
- 42" KITCHEN OVERHEAD CABINETS



OPTIONAL MASTER BATH #1 \$1,495

OPTIONAL MASTER BATH #1 \$2,295



Jenkins

Model # 340LD28522A

Approx 1,393 Sq Ft.

26'-8" x 52'
 2 Bedrooms, 2 Baths
 Den Model
 Island Kitchen
 Eat-In Dining Room

Large Master Suite w/ Walk-In
 Closet
 Optional Master Bath
 Alternatives
 Optional Full Front Porch

Copyright © Palm Harbor Homes, Inc. Because Palm Harbor Homes has a continuous product updating and improvement process, prices, plans, dimensions, features, materials, specifications and availability are subject to change without notice or obligation. Please refer to working drawings for actual dimensions. Renderings and floor plans are artist depictions only and may vary from the completed home. Square footage calculations and room dimensions are approximate and subject to industry standards.



STANDARD ELEVATION

Note:
Skirting shown for
illustration purposes only

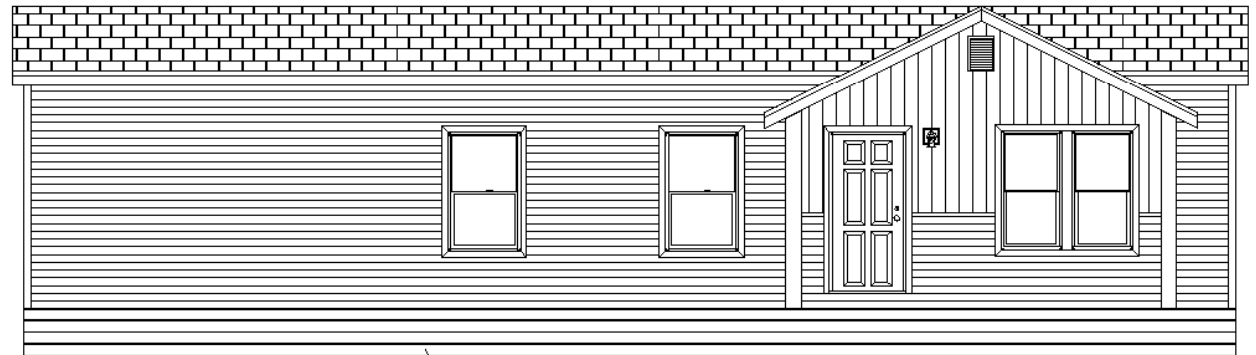


STANDARD ELEVATION W/OPT PORCH



OPTIONAL FRONT ELEVATION

Note:
Skirting shown for
illustration purposes only



OPTIONAL SIDE ELEVATION

Note:
Skirting shown for
illustration purposes only

Optional Jenkins Exterior Elevations Includes: \$1795

- *Vinyl Window & Door Trim (front door side)
- *1/2 Vinyl & 1/2 Vinyl Shake Front Endwall Only
- *7" Vertical Vinyl In Gable Front End Wall
- *Rectangle Louver Painted (WHITE or BLUE) Ship Loose
- *Vinyl 6" Post (4 full & 2 half post) 4-Corbels Per Print

*** Front Door Side Only

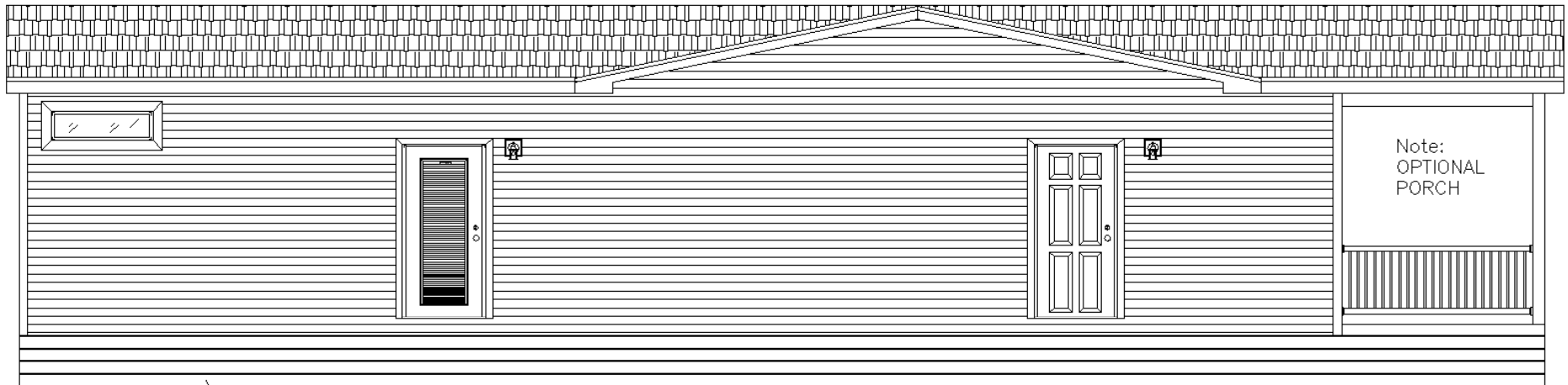
Optional Jenkins Side Elevation Includes: \$1795

- *Legend Series Drop Down Dormer w/Hardie Post
- *1/2 Vertical 7" Vinyl (TOP) In Dormer
- *1/2 Horizontal Vinyl Lap (BOTTOM) In Dormer
- *Vinyl Window & Door Trim In Dormer
- *Rectangle Louver Painted (WHITE or BLUE)
- *Vinyl Window Trim Front Door Side
- *Optional 6 Panel \$695



JENKINS ELEVATION

MODEL# 340LD28522A



Note:
Skirting shown for
illustration purposes only

OPTIONAL 24' DORMER ELEVATION KITCHEN SIDE

Optional Jenkins Side Elevation (Kitchen Side) with 24' Dormer

- * 24' Dormer - \$1,445
- * Steel Door \$795



JENKINS ELEVATION

MODEL# 340LD28522A